



## Group analysis

On these pages we would like to show a few examples of the types of information you acquire with RealTrack Fútbol.

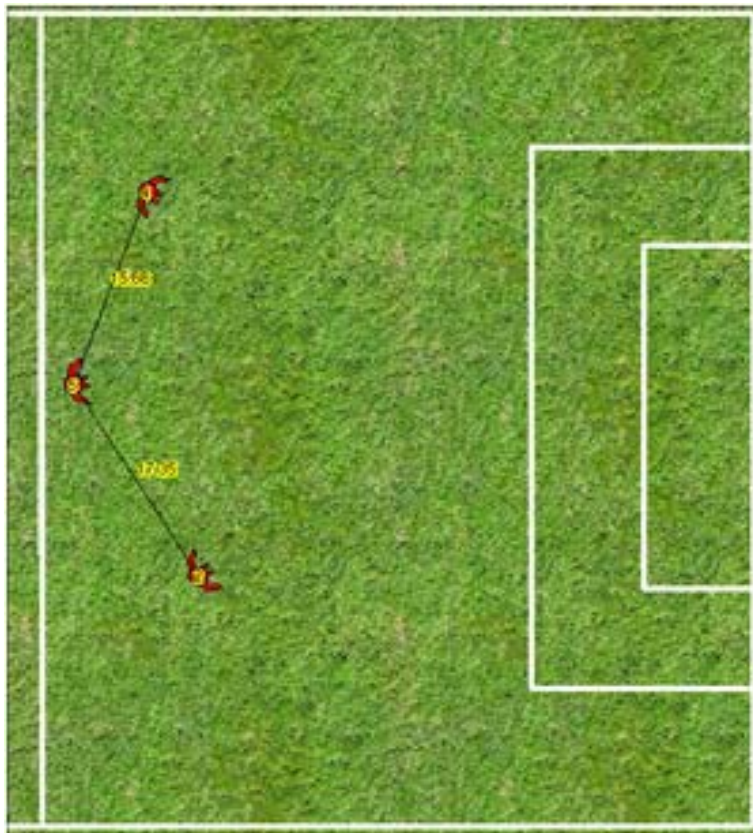
In the following examples of group or team training phases we have restricted the amount of monitored players to three with their respective lines. But the possibilities are unlimited

The trainer can at any time visualize the positions of his players while they are carrying out different tasks and training assignments.

Which ever system you may prefer, you will always depend on the perfect execution of your strategy.

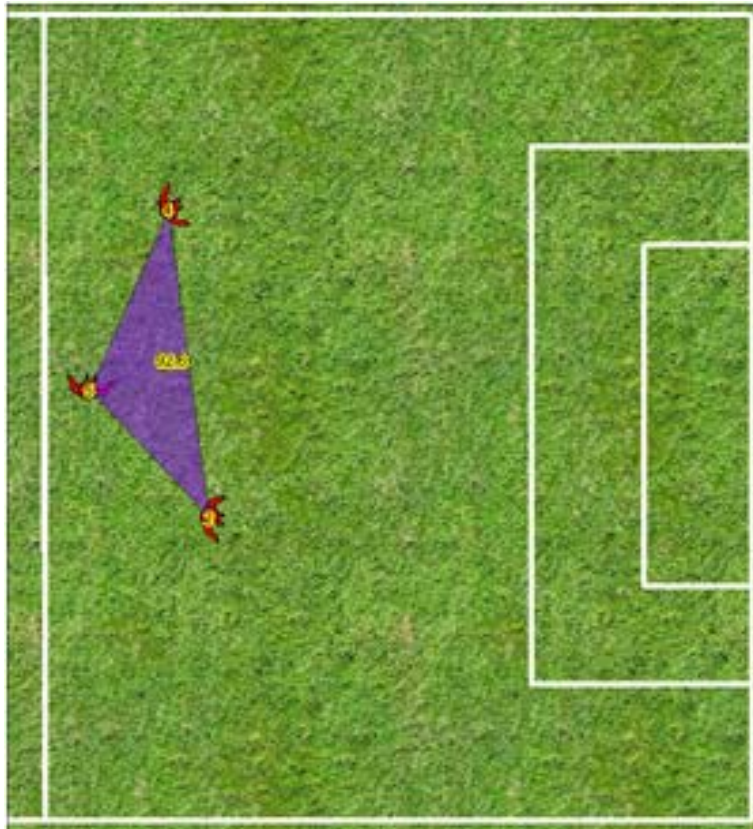
RealTrack Fútbol enables you to enhance performance and efficiency of your players.

## Relation to a midfield line



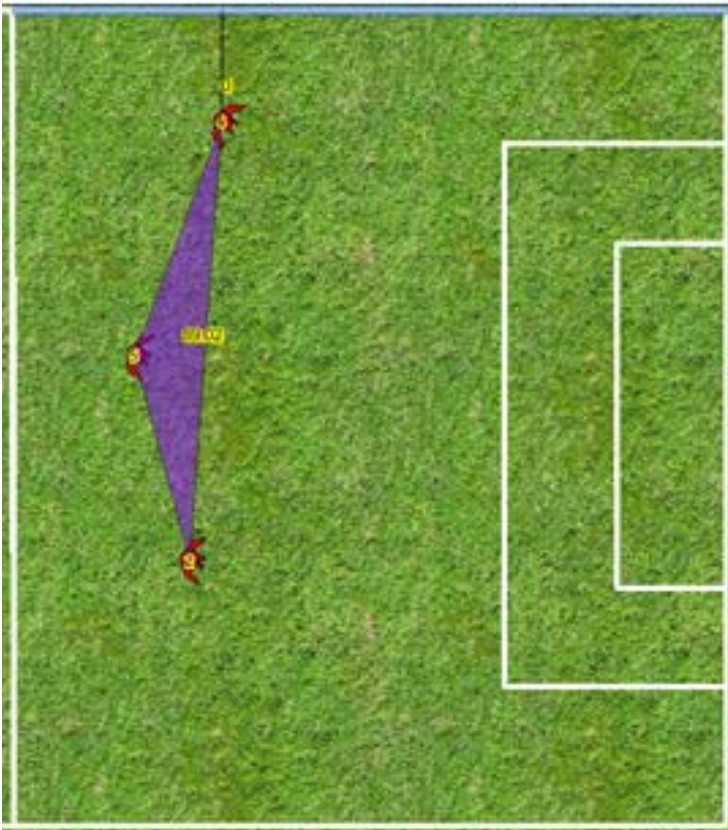
The trainer wants to know the distances between his players. In this case we have established a relation between three players.

**Visualize the space players cover**



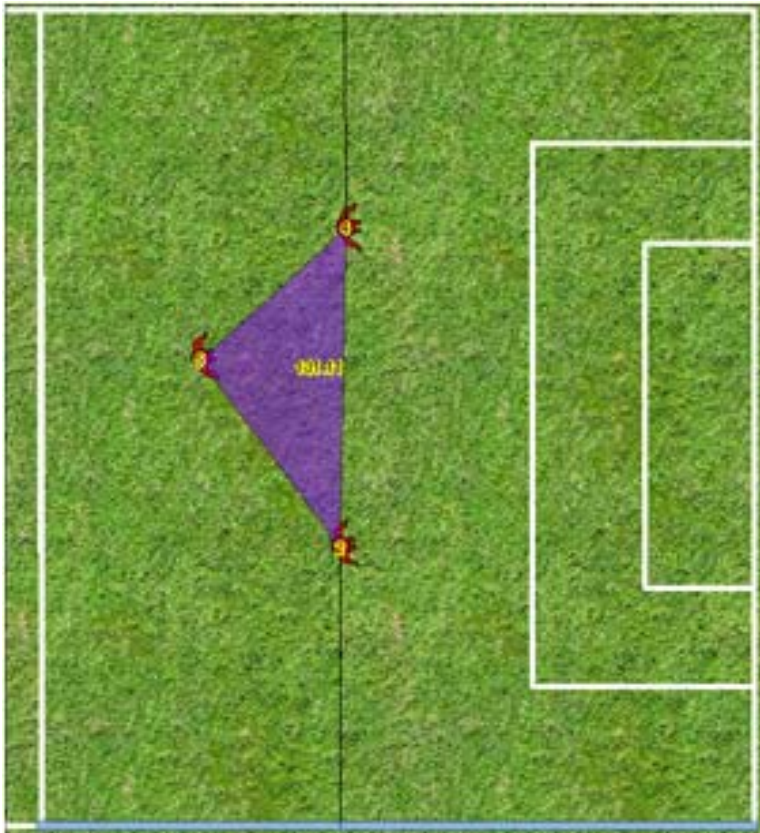
In certain cases the trainer needs to know the space his players cover. In this example you can see the forward movement of three players and the area covered by them.

**Visualize the area players with interaction cover**



In many cases the trainer needs to know the space his players cover. In this example you can see the forward movement of three players and the area covered by them. One can observe easily the distance of the players to an external line, in this case the outside line.

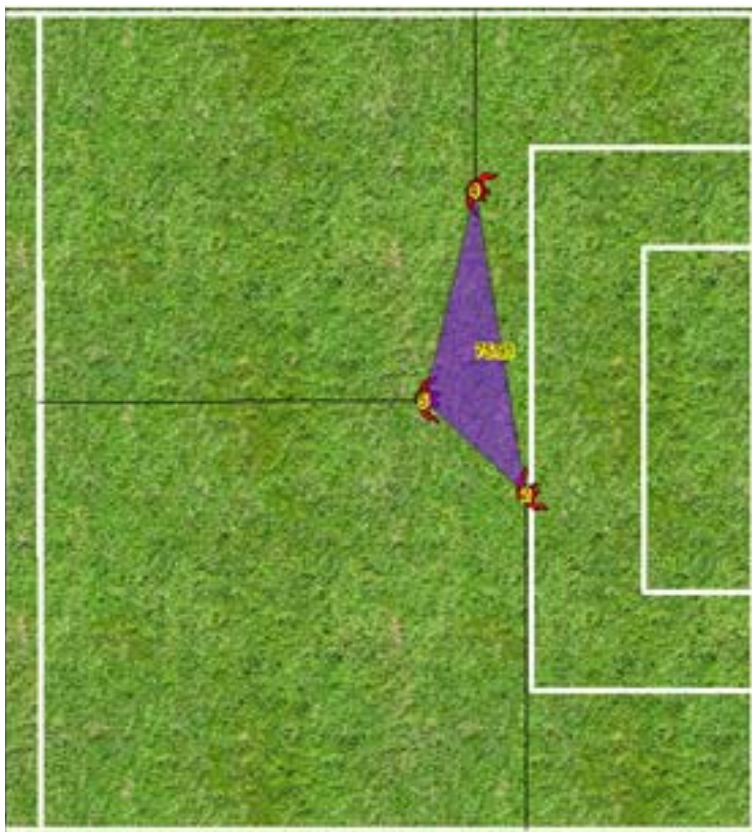
Visualize the space players cover with two respective lines



In this example you can observe three players occupying their correspondend area with two perspective external lines.



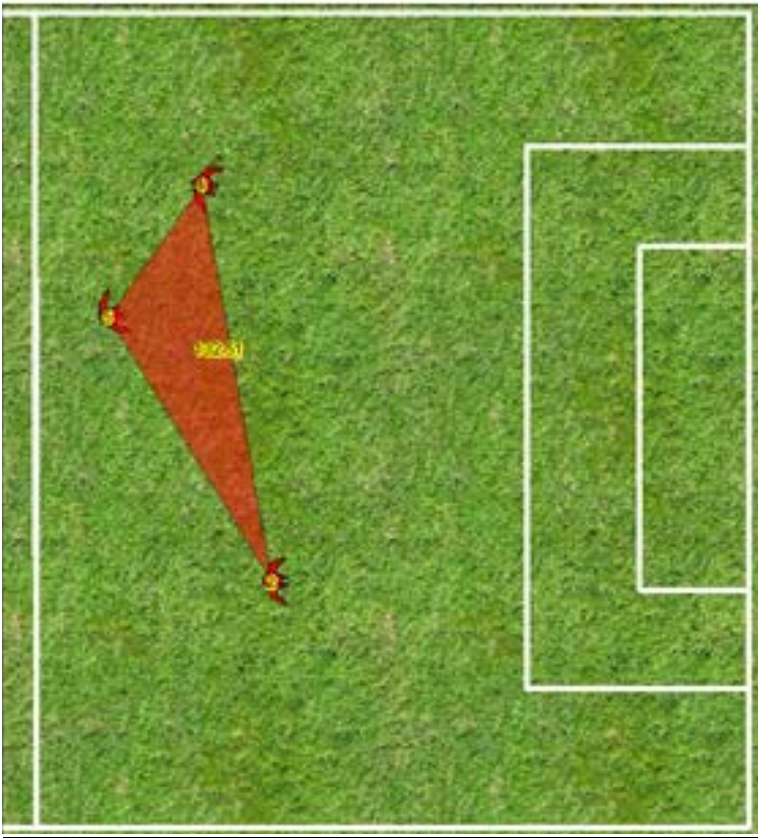
Visualize the area covered by your players with two perspective lines



In this example you can monitor the area covered by three players, with two perspective external lines and one direct connecting line.



**Visualize certain training situations and tasks**



With **RealTrackFootball** you can visualize training units. If your players dont meet a given training task, the colour of the graphic display will change.